

054314

RECEIVED
LARAMIE COUNTY
CHEYENNE, WY.

'89 FEB 17 AM 10 26

CERTIFIED LAND CORNER RECORDATION

DESCRIPTION OF CORNER EVIDENCE FOUND, AND ORIGINAL RECORD (if known)

1/4 S.20 Found G.L.O. stone marked 1/4 lying on its side 72' West of position as re-established.
S.29
T.17N., R.67w.
6th P.M.

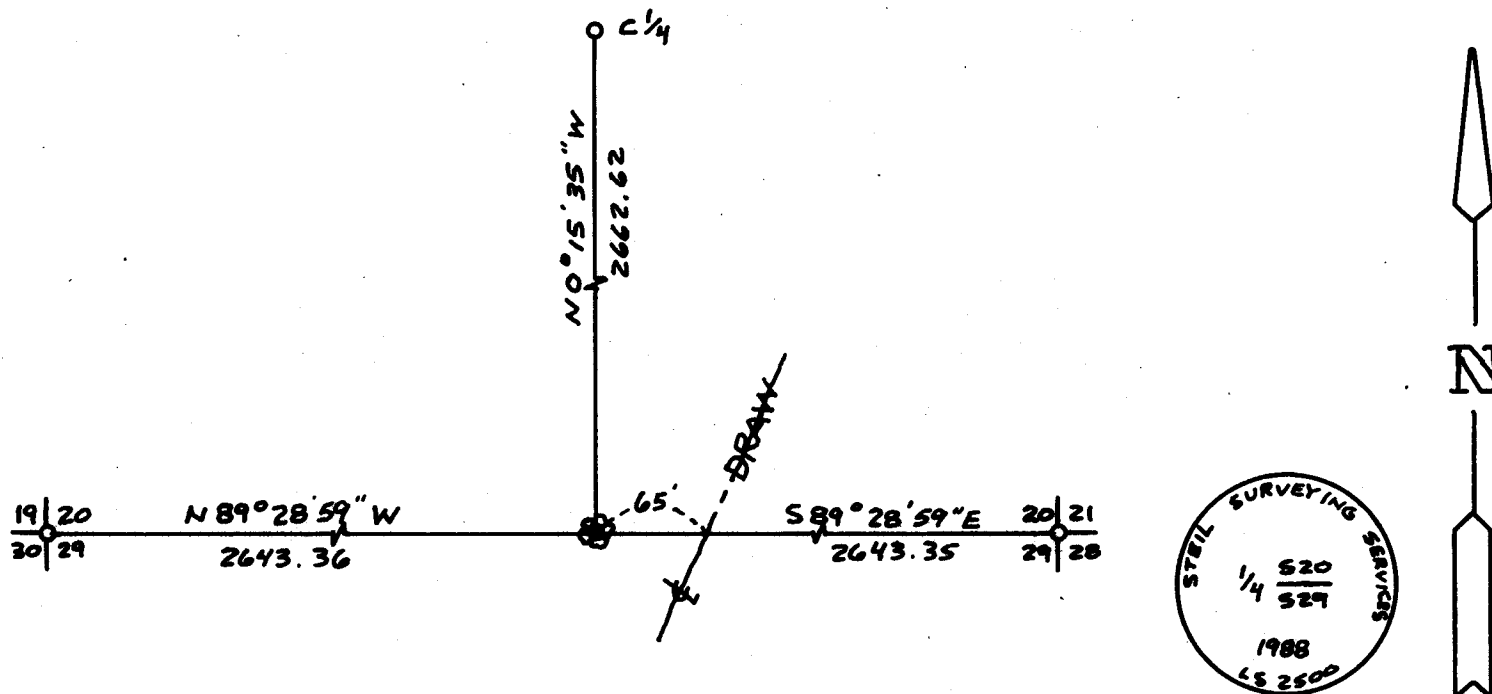
G.L.O. Record: Granite 16"x12"x4" set by Alfred M. Rogers, October 19, 1872

DESCRIPTION OF MONUMENT AND ACCESSORIES ESTABLISHED TO PERPETUATE THE ORIGINAL LOCATION OF THIS CORNER:

At the corner: Set at proportionate distance and where original calls match centerline of drain East. Set 3"x30" Aluminum Pipe with 3 1/2" Aluminum Cap projecting 0.4' above ground and stamped as shown below with stone buried on North side, encircled with a collar of stone.

Accessories : See ties below.

SKETCH, WITH COURSE AND DISTANCE TO ADJACENT CORNER IF DETERMINED IN THIS SURVEY. (May Sketch or Paste Reproduction on Reverse Side.)



I, John A. Steil certify that I have personally performed or reviewed the work done on the diagrammed corner as reported on this recordation form and approve the same.

Signature of Surveyor

L.S. 2500

Registration No.

STATE OF WYOMING,
Office of Clerk and Recorder,
County of _____

This "corner record" was filed for record on the _____ day of _____, 19____, was noted on the cross-index plat and is assigned page No. _____, in book No. _____

James C. Whitcomb
County Official

Cross Index No.	R-7	T. 17N	R. 67W	Mer. 6th
				Mer.
				Mer.
				Mer.
				Mer.
				Mer.
				Mer.